



Trusted by Hospitals, Loved by Moms.

# Cleaning Instructions for Ameda Breast Pumps and Kits

## For Health Care Professions

Below are the CDC and EPA links to recommended disinfectants for SARS-COV-2 which causes COVID-19.

**CDC** Interim Infection Prevention and Control Recommendations for Patients with Suspected or Confirmed Coronavirus Disease 2019 (COVID-19) in Healthcare Settings

[Learn More](#)

**EPA** EPA's Registered Antimicrobial Products for Use Against Novel Coronavirus SARS-CoV-2, the Cause of COVID-19

[Learn More](#)

## For Mothers at Home

**CDC** Interim Guidance on Breastfeeding for a Mother Confirmed or Under Investigation For COVID-19

[Learn More](#)

If using steam sanitizing process, please follow cleaning instructions first.

If using a brush, check pump kit parts for cracks, chips, tears or deformation before and after brush use.

## Cleaning the Ameda Breast Pump

### For At-Home/End Users

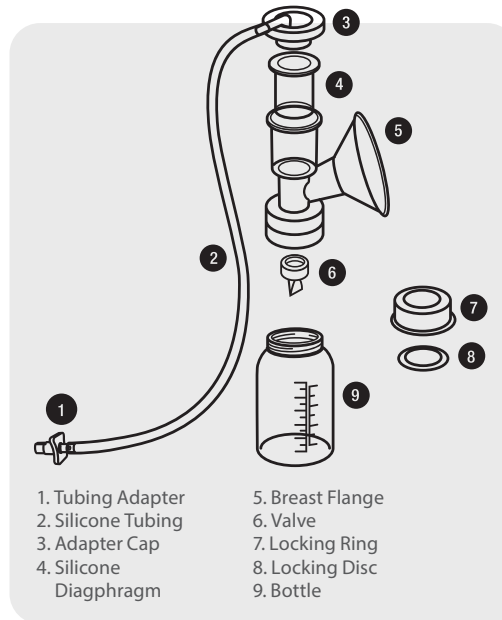
After each pumping, turn pump OFF.

Wipe with clean, damp cloth.

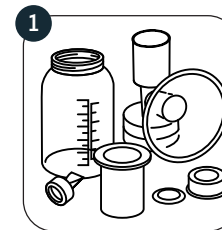
### For Hospital/Rental Stations

Turn pump OFF, Clean between users, wearing disposable gloves. Use only Ameda approved cleaners such as Metrex CaviWipes or PDI Sani-Cloth AF3

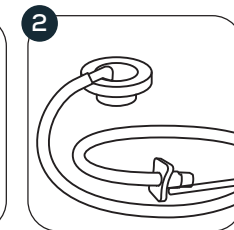
## Cleaning the Ameda HygieniKit Milk Collection Kit



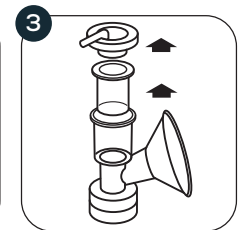
- 1. Tubing Adapter
- 2. Silicone Tubing
- 3. Adapter Cap
- 4. Silicone Diaphragm
- 5. Breast Flange
- 6. Valve
- 7. Locking Ring
- 8. Locking Disc
- 9. Bottle



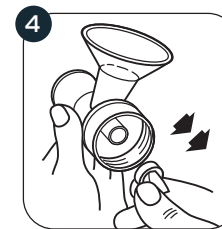
Wash before use if kit is unsterile and after each use.



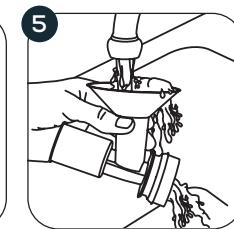
\*Important Do Not Wash (1) Tubing Adapter, (2) Silicone Tubing, and (3) Adapter Cap.



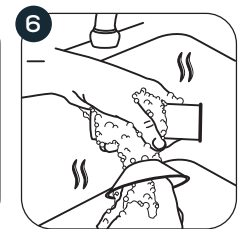
Disassemble parts.



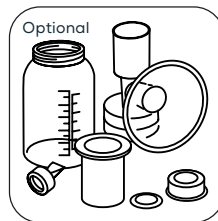
Grasp valve by thick sides.



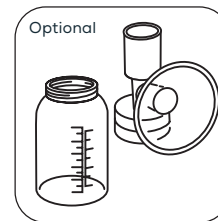
Rinse with cool, clean water.



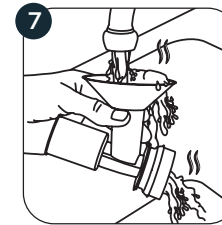
Wash the parts with warm soapy water under running water. Do not immerse parts in sink. Do not insert anything into valves while cleaning.



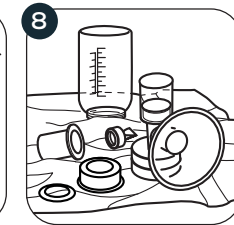
Boil to sanitize



Wash larger pieces in upper rack of dishwasher.



Rinse with warm, clean water.



Air Dry.

**\*Important Do Not Wash**  
1. Tubing Adapter  
2. Silicone Tubing  
3. Adapter Cap

These parts Do Not need to be washed before first use or after each use - milk does not come into contact with these parts while pumping.



Consult Instructions For Use  
Ameda Breast Pumps and HygieniKit/Manual Pump



Trusted by Hospitals, Loved by Moms.

# Cleaning Instructions for Ameda Breast Pumps and Kits

If using steam sanitizing process,  
please follow cleaning instructions first.

If using a brush, check pump kit parts  
for cracks, chips, tears or deformation  
before and after brush use.

## Cleaning the Ameda Breast Pump

### For At-Home/End Users

After each pumping, turn pump OFF.

Wipe with clean, damp cloth.

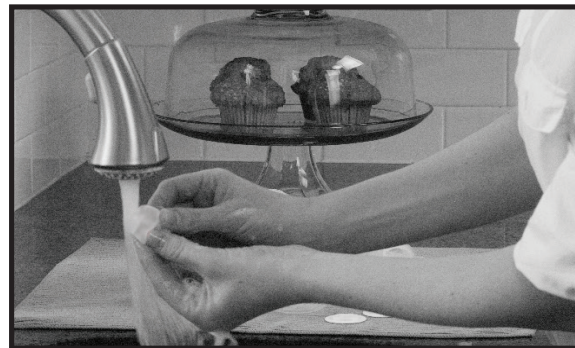
### For Hospital/Rental Stations

Turn pump OFF, Clean between users, wearing disposable gloves. Use only Ameda approved cleaners such as Metrex CaviWipes or PDI Sani-Cloth AF3

## Cleaning the Ameda Mya Breast Pump Kit

### CLEANING: Cleaning with warm, soapy water.

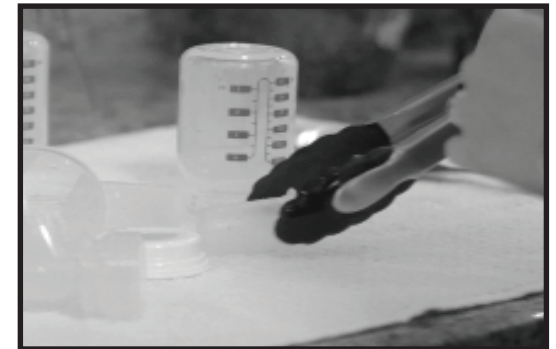
After every use, unless otherwise directed by your healthcare provider, prepare the product for use as follows:



**1. RINSE** any milk from pump parts with cool water.

**2. Hand WASH** with warm, soapy water, the flange(s), back-flow protector(s), valve(s) and (if applies) bottle(s), locking ring(s) and locking disc(s). Wash valve(s) and back-flow protector(s) silicone gently\*.

**3. RINSE** with warm, clean water the flange(s), back-flow protector(s), valve(s) and (if applies) bottle(s), locking ring(s) and locking disc(s).



**4. Air DRY** each part on a clean surface.

\*Ameda does not recommend inserting anything into the valves and backflow protectors for cleaning but if you want to use a brush or sanitizing steam bags, then it is very important to check for cracks, chips, tears or deformation before and after use.



**ALWAYS** wash hands well  
with soap and water.



Consult Instructions For Use  
Ameda Breast Pumps and HygieneKit/Manual Pump