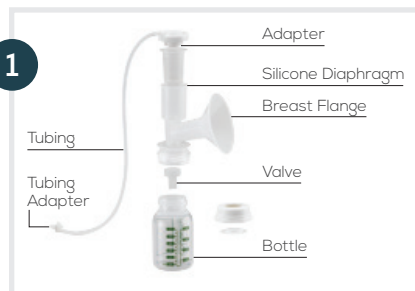


Amēda® Platinum® Quick Start Guide

Ameda Platinum® Multi-User Breast Pump with HygieniKit™ Milk Collection System featuring Proven Airlock Protection™ to help protect breast milk, kit tubing and the pump.

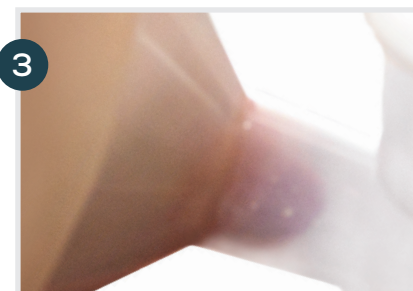
GETTING STARTED before beginning, wash hands



- If sterile, use immediately (kit is preassembled)
- If not sterile, clean and assemble the kit (refer back page of this Quick Card Guide).



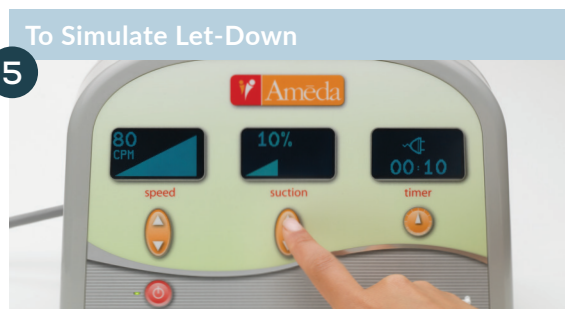
- Insert tubing adapter.



- Center flange on breast to create seal.
- Refer to back page of this Quick Card Guide for proper flange fit.



- Push On button.
- Speed starts automatically at 80 cycles per minute.
- Suction starts at the lowest setting at 1%.



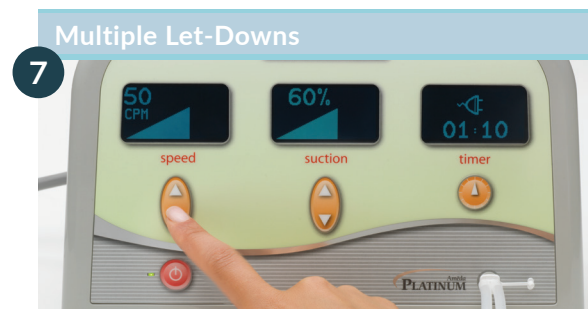
To mimic a baby's sucking to start milk flow:

- Push suction button up to your **highest comfortable** level.
- Try starting at 10% and gradually continue to increase suction level to arrive at your **highest comfortable** level.



To mimic a baby's changing pattern to slow, deep draws or sucks:

- Once milk flows:
 - Push speed button down to a slower speed to help drain milk.
 - Try slowing speed to 50-60 cycles per minute. You can lower speed further if that's more comfortable.
 - Continue to adjust suction as needed to arrive at your **highest comfortable** level to drain milk.



When milk flow slows, try for another let-down:

- Increase speed back to 80* cycles per minute.
- Adjust suction to your **highest comfortable** level.
- Once milk flows again, lower speed to help drain milk.

IMPORTANT: Only use an Ameda HygieniKit Milk Collection Kit. Consult your healthcare provider on pumping session time.

Cleaning the Ameda Platinum Breast Pump

For At-Home/End Users:

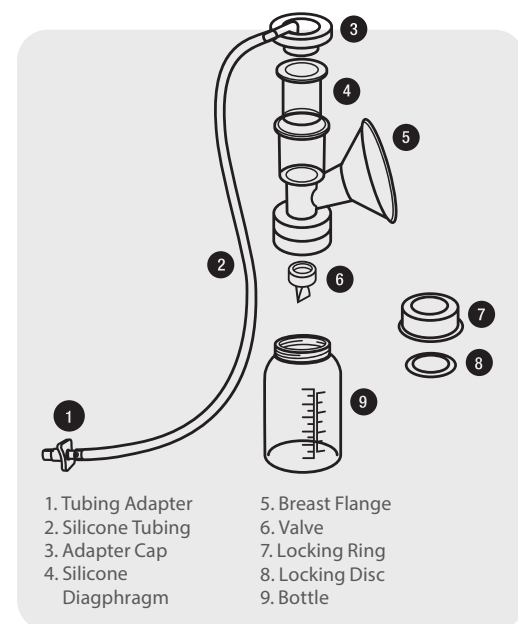
After each pumping, turn pump OFF.

Wipe with clean, damp cloth.

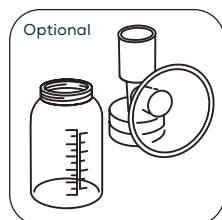
For Hospital/Rental Stations:

Turn pump OFF, Clean between users, wearing disposable gloves. Use only Ameda approved cleaners such as Metrex CaviWipes or PDI Sani-Cloth AF3

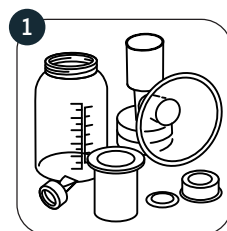
Cleaning the Ameda HygieniKit Milk Collection Kit



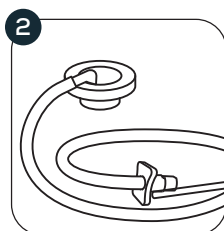
Boil to sanitize



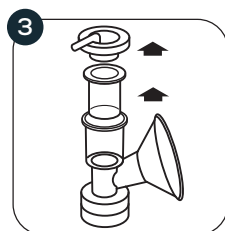
Wash larger pieces in upper rack of dishwasher.



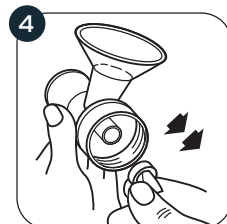
Wash before use if kit is unsterile and after each use.



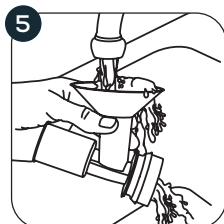
*Important Do Not Wash (1) Tubing Adapter, (2) Silicone Tubing, and (3) Adapter Cap.



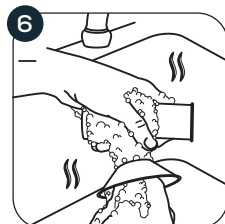
Disassemble parts.



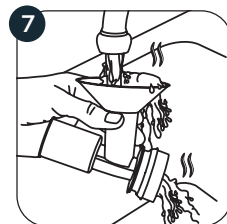
Grasp valve by thick sides.



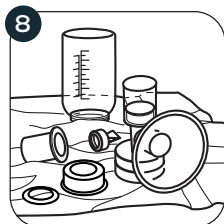
Rinse with cool, clean water.



Wash the parts with warm soapy water under running water. Do not immerse parts in sink. Do not insert anything into valves while cleaning.



Rinse with warm, clean water.




Air Dry.

*Important Do Not Wash
1. Tubing Adapter
2. Silicone Tubing
3. Adapter Cap

These parts Do Not need to be washed before first use or after each use - milk does not come into contact with these parts while pumping.

If using steam sanitizing process, please follow cleaning instructions first.

If using a brush, check pump kit parts for cracks, chips, tears or deformation before and after brush use.

 Consult Instructions For Use
Ameda Platinum and HygieniKit/Manual Pump

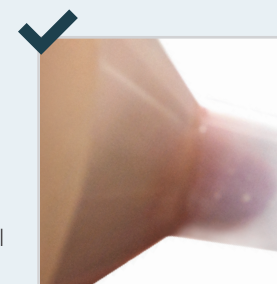


Find your Best Fit

A good breast flange fit ensures a perfect seal which enhances your comfort and pumping efficiency. Ameda's CustomFit Flange System makes finding the right fit easy.

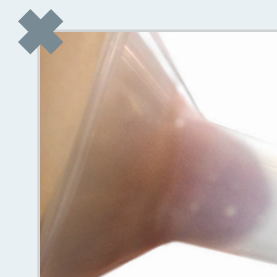
Good Fit

During pumping, your nipple moves freely in the breast flange tunnel. You see space around the nipple. Not much areola is drawn into the tunnel with the nipple.



Too Small

During pumping, some or all of your nipple rubs against the sides of the breast flange tunnel.



Too Large

During pumping, more areola is drawn into the breast flange with your nipple. Your areola may rub against the side of the breast flange tunnel.

